



Our Water Counts



GE
Intelligent Platforms



we all count on water...





water is life



The numbers are in...

Recent data show how today's water crisis affects global health and safety.

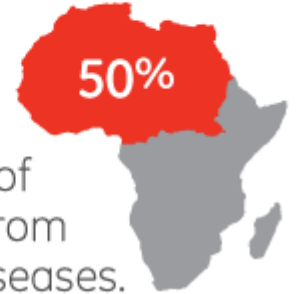


Globally, water-related disease causes **3.575 million** deaths every year.

27% of the urban population

in the developing world does not have piped water at home.

- More than 50% of Africans suffer from water-related diseases.
- Every day, 2 million tons of sewage and waste enter the world's water.
- Naturally occurring arsenic pollution in groundwater now affects about 140 million people in 70 countries.





water is growth



The numbers are in...

Recent data tell the story of global water scarcity and access.

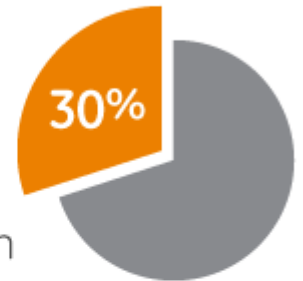
48
nations

will face water stress or scarcity by 2025.

In some cities, water usage has gone up **800%**.



- 30% of U.S. cities face a scarcity crisis in the next 4 years.
- Even Brazil, the most water-rich nation, faces supply deficits of 80+%.
- In coming years, 95% of urban population growth will take place in the developing world.





water is money



The numbers are in...

Recent data show how much the water crisis is costing us.



240,000 water mains break every year at a cost of **\$500,000** per break.

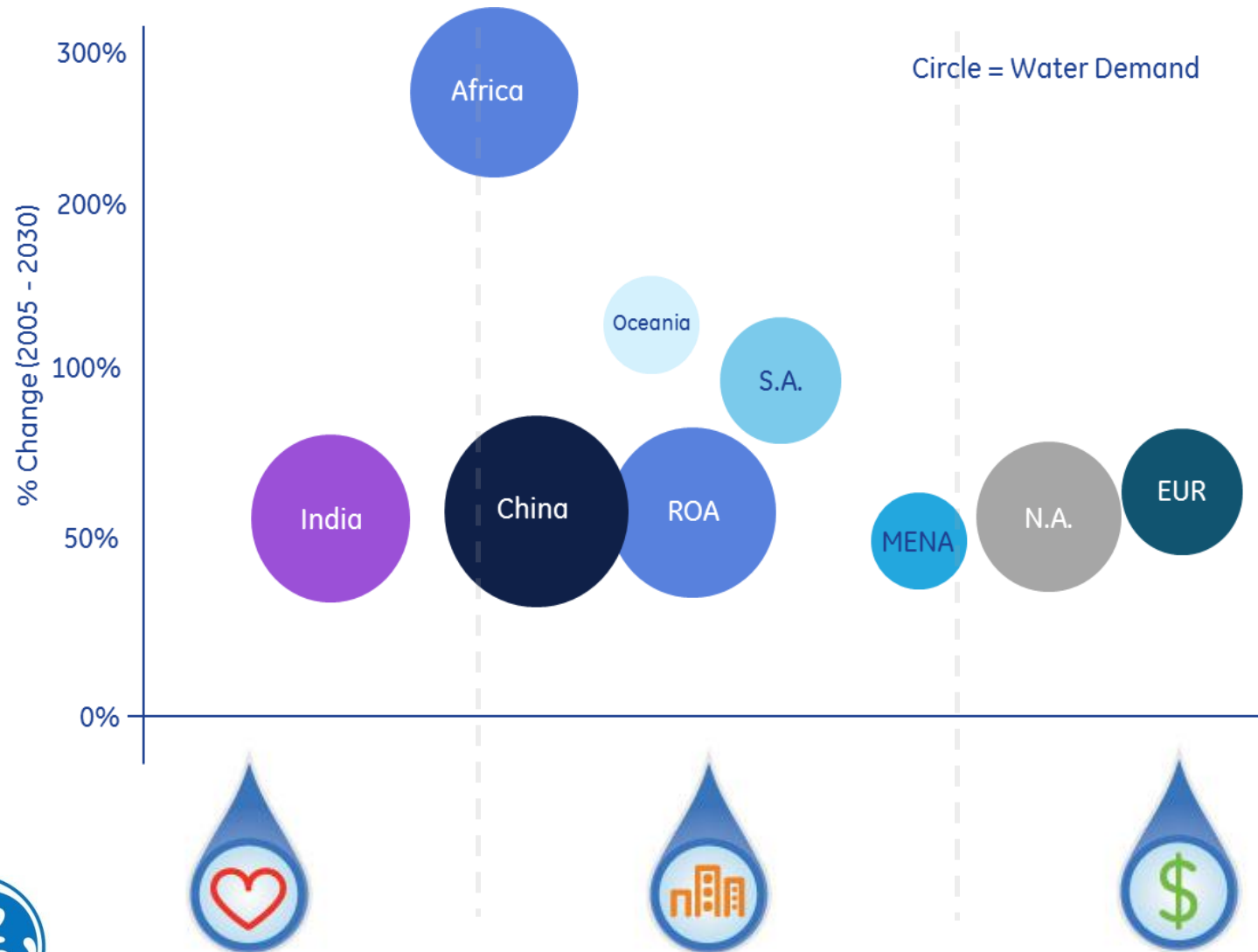
This year, U.S. utilities will spend almost **\$30 billion** on water treatment, energy, labor and operations.

- 22% of treated water goes unaccounted for during distribution.
- People in Nairobi pay 5 to 7 times more for water than the average North American.
- To meet demand, treatment and water reuse expenses will reach \$3 billion by 2015.
- Water treatment and conveyance accounts for 4% of the U.S. energy grid.

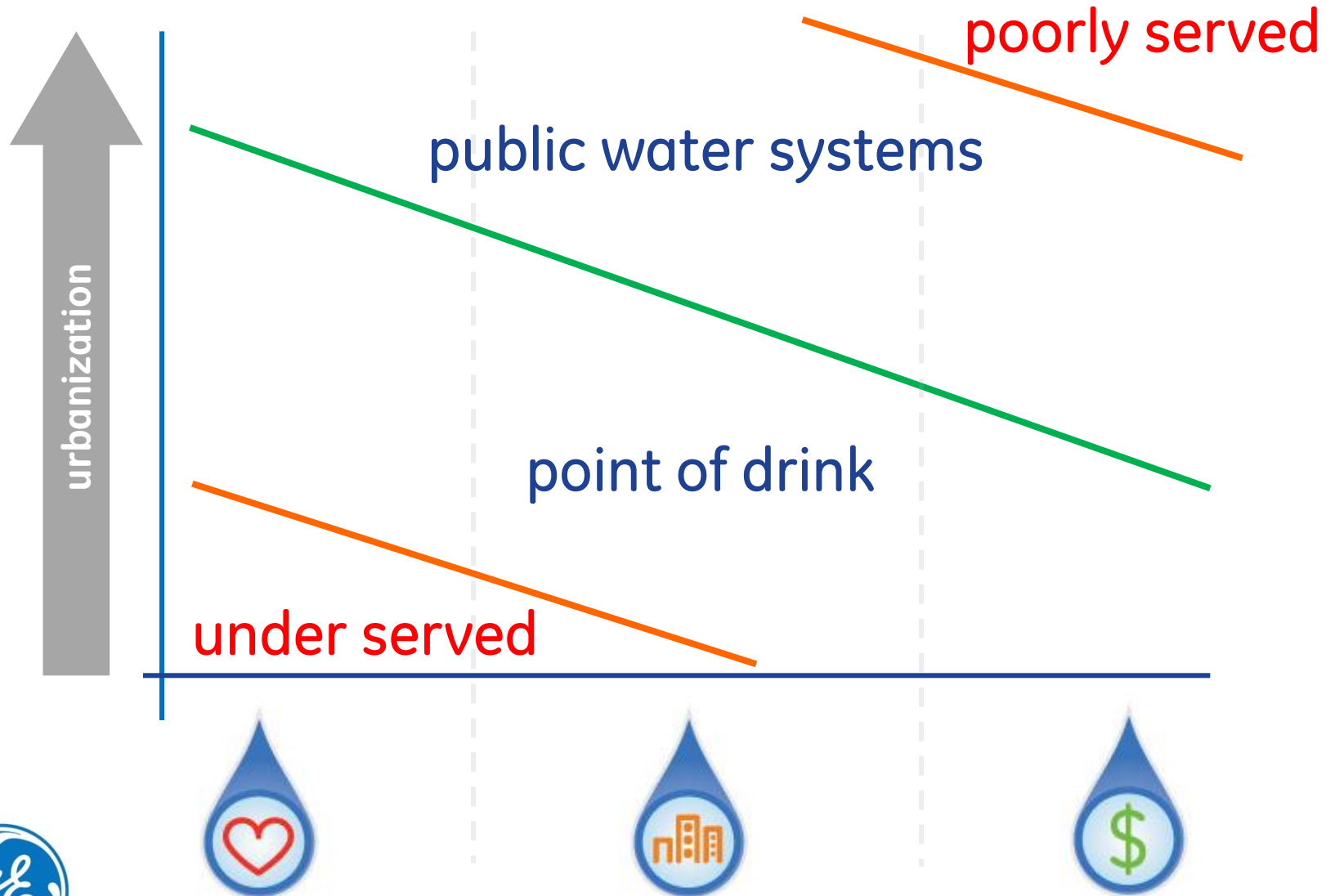


it's time to change
the numbers

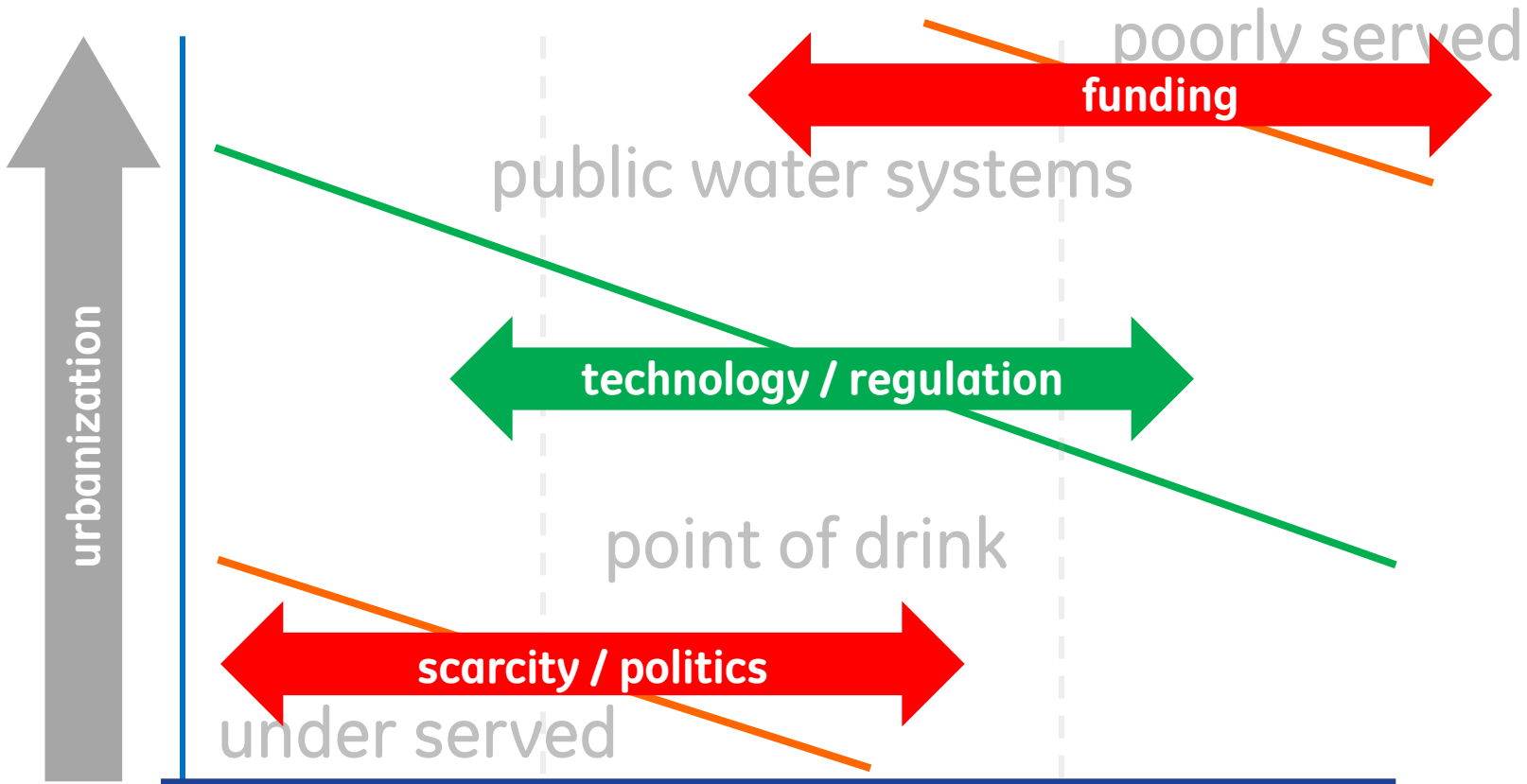
water usage by region



water economics



water economics





intelligent water

connecting information to better manage water resources





the **uva** bay game





GE
Intelligent Platforms

©2009 GE Intelligent Platforms, Inc. All Rights Reserved.
*Trademark of GE Intelligent Platforms, Inc.
All other brands or names are property of their respective holders